



# bLink2 User Manual



## Warranty Registration

No.

Product Name		Bike Model	
Purchase Date	/ /	Purchase Price	
User Name		Phone	
Reseller Phone			
Reseller Address			
Reseller Seal/ Sign			



Product Warranty Period



## Note :



- Suggest the connection distance between bLink and ECU < 5M
- Minimum voltage of vehicle > 11.5V
- Special ECU model need to wait 5 sec to link.
- Use bLink to flash ECU, the process will take much time.
- bLink and iLink can not link with ECU at the same time.

## 1. System Descriptions

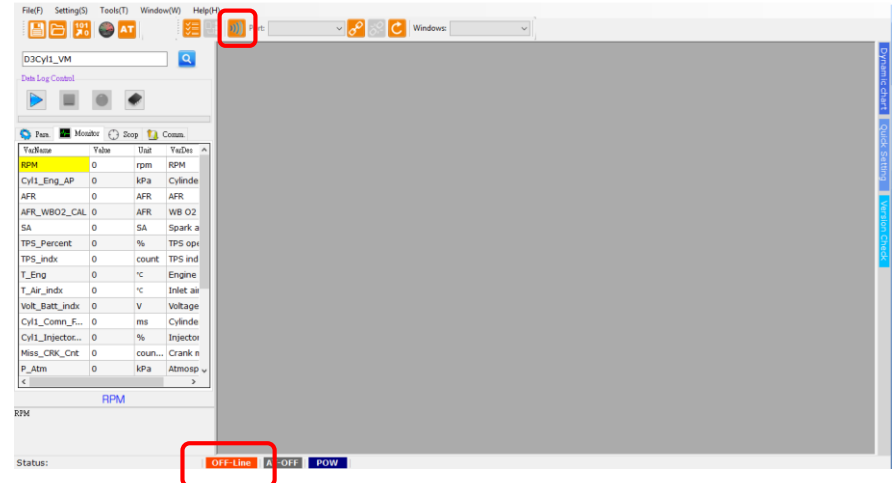


Speed Tuning Super & RCmini5 Flash Tool

aRacer APP

## 2. Connect to RC Super ECU by blink2

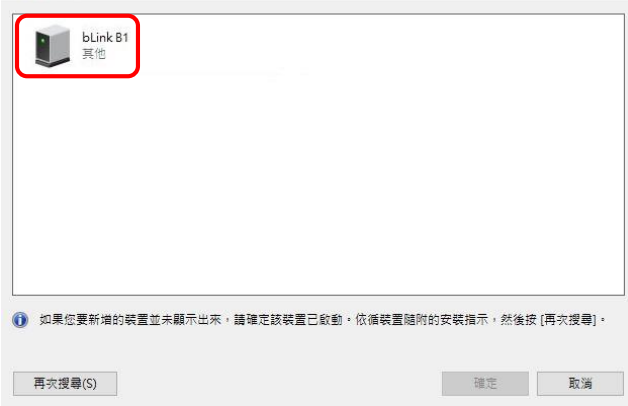
2.1 Open SpeedTuning Super and Click to search bLink module



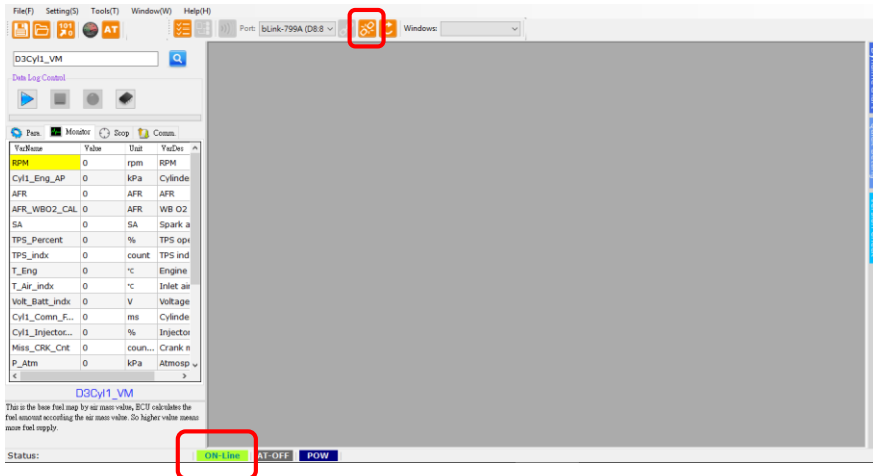


## 2.2 Double click bLink module to link. Default paired number : 0000

選擇藍牙裝置

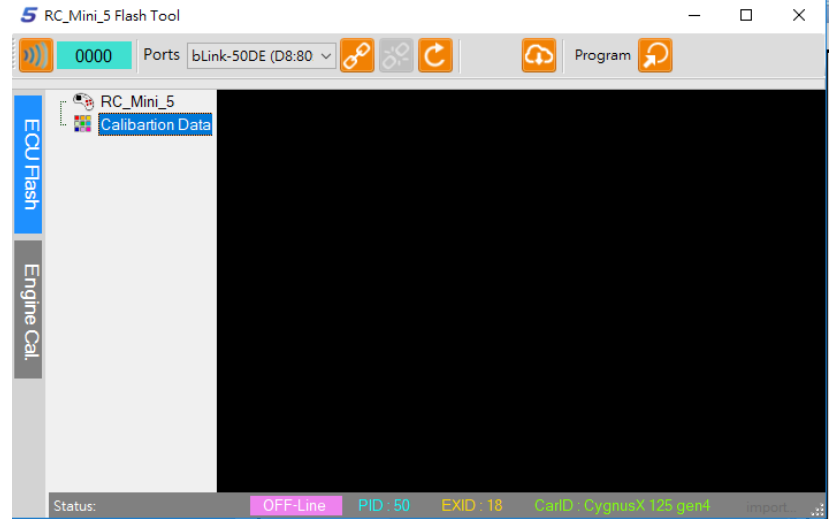


## 2.3 SpeedTuning Super linked with RC super ECU



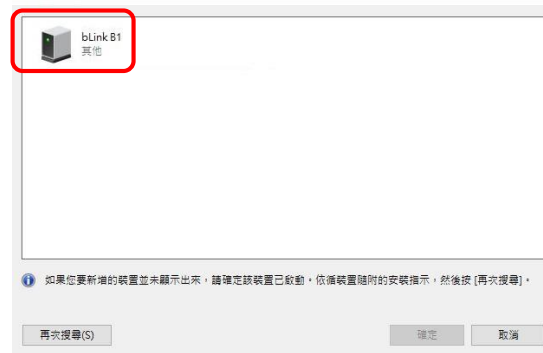
## 3. Connect to RCmini5 ECU by blink2

### 3.1 Open RCmini5 Flash Tool and Click to search bLink module



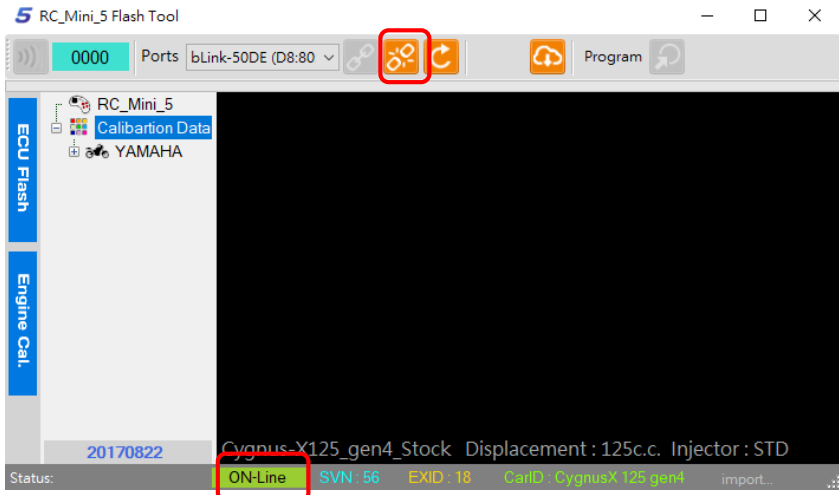
### 3.2 Double click bLink module to link. Default paired number : 0000

選擇藍牙裝置





### 3.3 RCmini5 Flash Tool linked with RCmini5 ECU

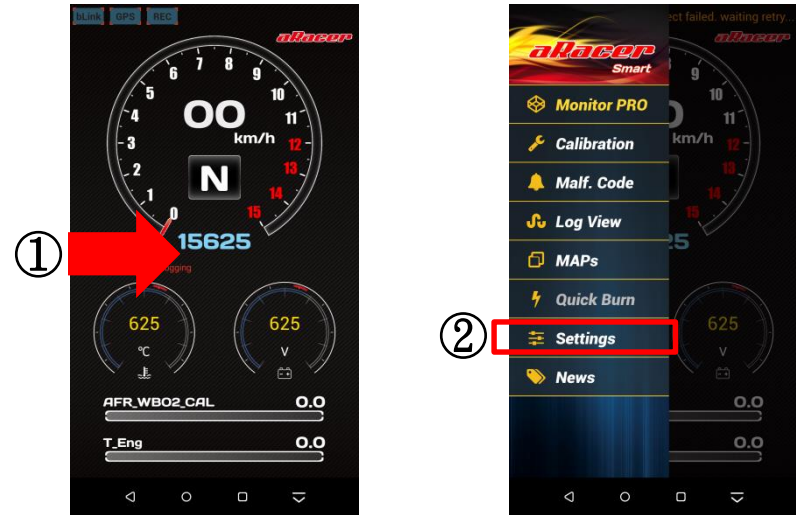


## 4. aRacer Smart

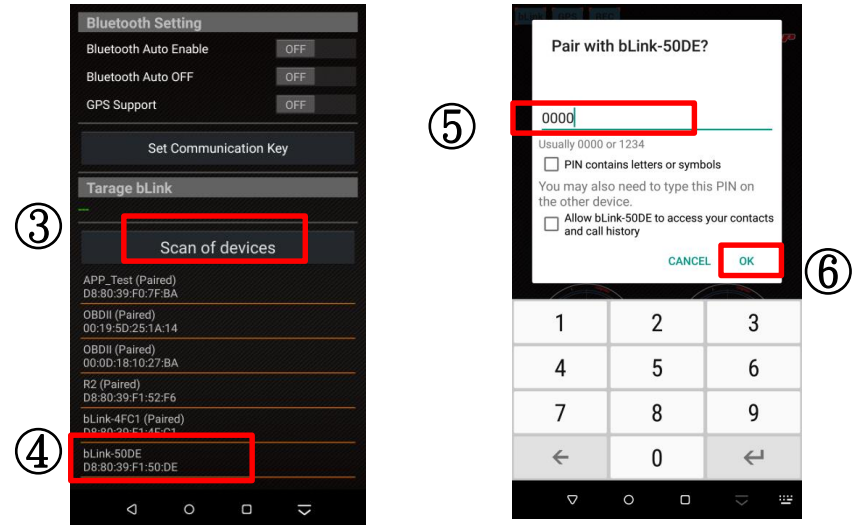
4.1 Download aRacer Smart from Google Play Store or Apple APP Store and install aRacer Smart.



4.2 Open ① the main menu and click ② Settings

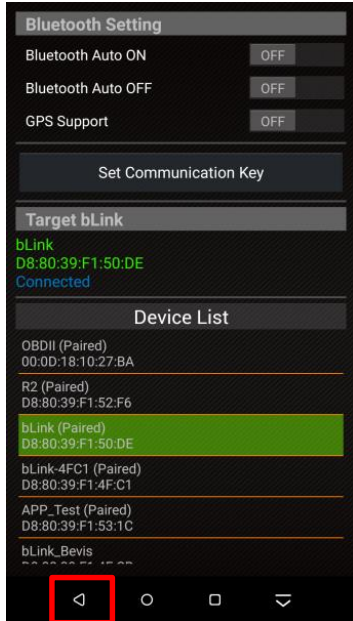


4.3 Click ③ the Scan of devices button. Select ④ the bLink module and ⑤ Fill in the default pair number (0000) and ⑥ click OK .

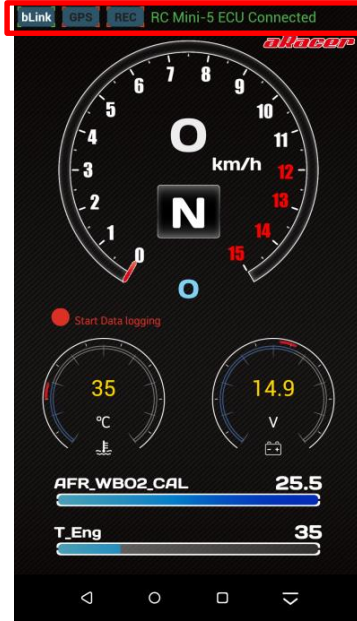




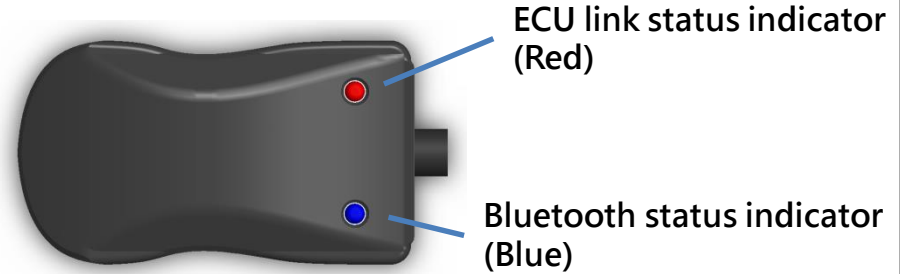
⑦ click the back button then ⑧ aRacer Smart linked with RCmini5.



⑧



## 5. bLink Indicator Light Descriptions



**5.1 Bluetooth status indicator :**  
Flash : Unlink  
Double flash : Link

**5.2 ECU link status indicator :**  
Red light on : ECU and bLink2 link


**Red Light flash quickly(5Hz) :** ECU (RC Super 、RCmini Plus2 、RCmini5) and bLink2 unlink

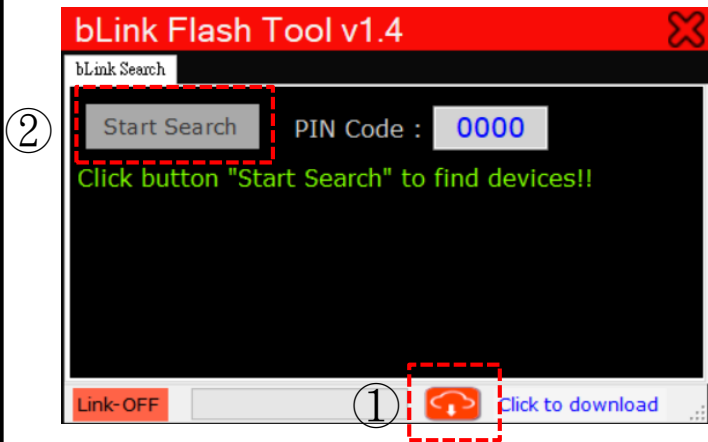
**Red Light flash slowly(2Hz) :** ECU (RC1 、RCmini Plus 、RCmini 4C) and bLink2 unlink



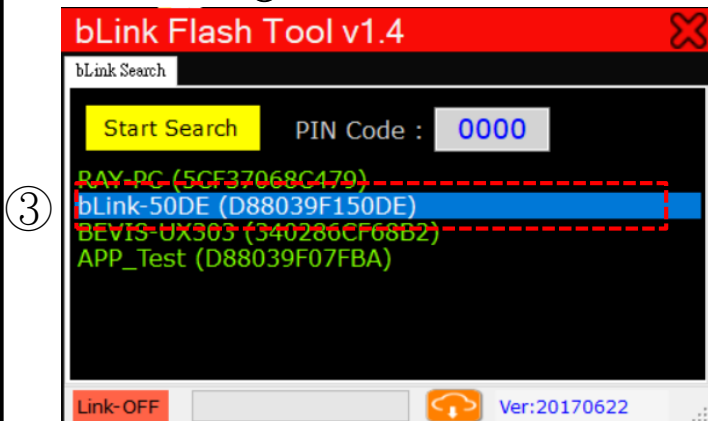
## 6. bLink Firmware Update

6.1 Download the bLink Flash Tool from aRacer Speedtek website. (<http://www.aracer-speedtek.com>) And install the bLink Flash Tool.

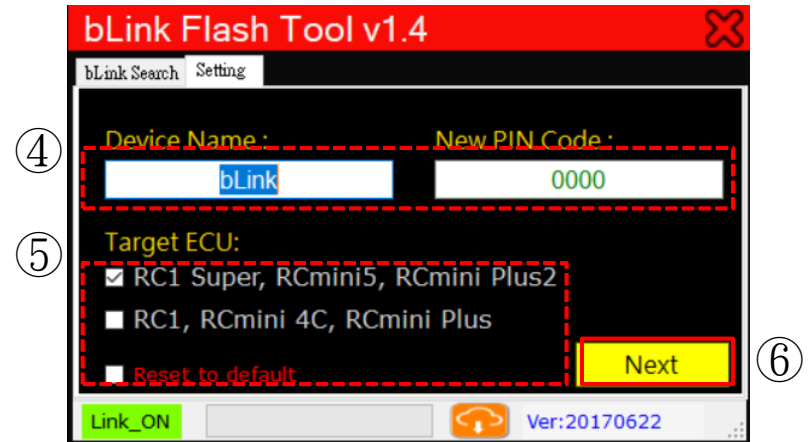
6.2 Open bLink Flash tool. Click ①  download the firmware and click ② **Start Search** to search bLink module



6.3 Select the ③ bLink module



6.4 Check the ④ Device Name and put new PIN Code (XXXX) of bLink module. Select ⑤ Target ECU and click ⑥ **Next**



6.5 Click ⑦ **Update** to flash bLink module

